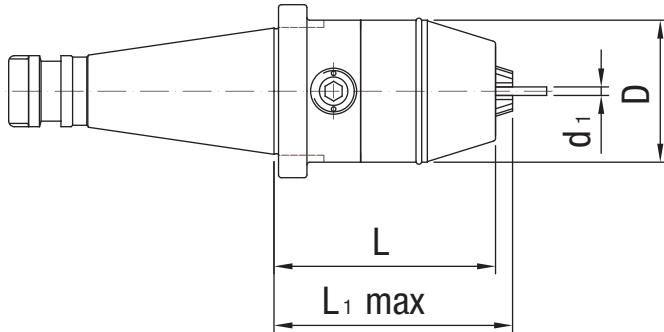


NC Standard Drill Chuck DIN 2080, Form A



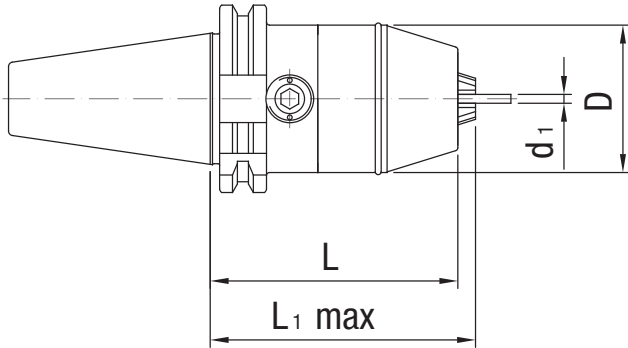
Nominal size SK/ISO	WTE Norm	Clamping range	Dimensions			Weight [kg]	Order designation	Order No.
			d ₁	D	L			
40	WTE 13	0.5 - 13	50	78	84	1.5	10.297.40.13	30342426
40	WTE 16	2.5 - 16	57	78	86	1.7	10.297.40.16	30342427

Dimensions in mm.

Spare parts and accessories at the end of this chapter. Custom designs available on request.

NC Standard Drill Chuck ISO 7388-1, Form A

(prev. DIN 69871-A)

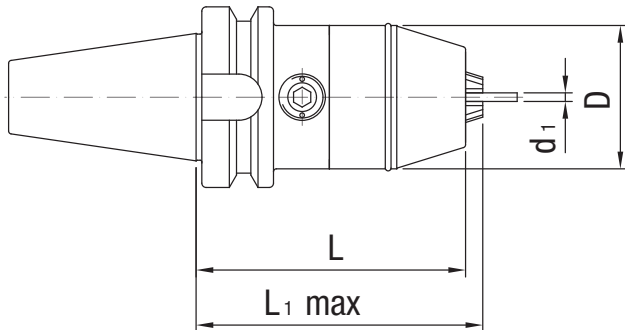


Nominal size SK/ISO	WTE Norm	Clamping range	Dimensions			Weight [kg]	Order designation	Order No.
			d ₁	D	L			
40	WTE 13	0.5 - 13	50	84	90	1.5	11.297.40.13	30342428
40	WTE 16	2.5 - 16	57	84	92	1.7	11.297.40.16	30342429

Dimensions in mm.

Spare parts and accessories at the end of this chapter. Custom designs available on request.

NC Standard Drill Chuck ISO 7388-2 (JIS 6339)

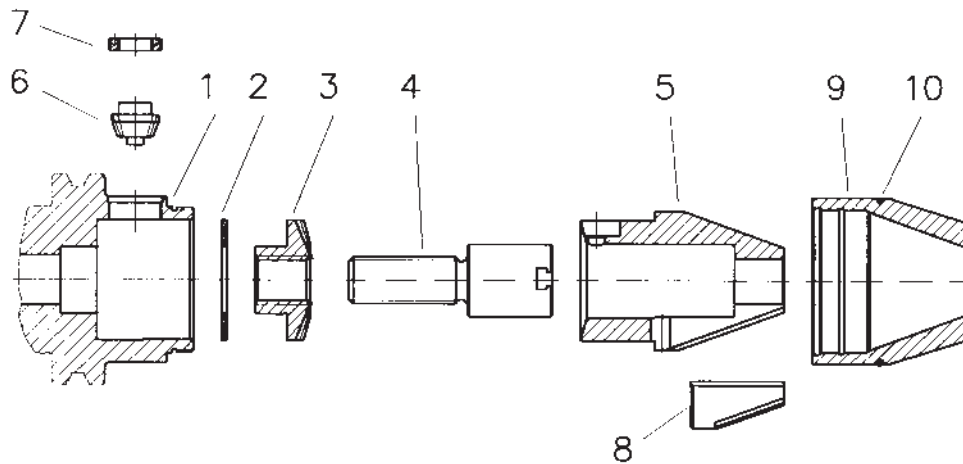


Nominal size BT	WTE Norm	Clamping range	Dimensions			Weight [kg]	Order designation	Order No.
			d_1	D	L			
40	WTE 13	0.5 - 13	50	94	100	1.8	20.297.40.13	30342430
40	WTE 16	2.5 - 16	57	94	102	2	20.297.40.16	30342431

Dimensions in mm.

Spare parts and accessories at the end of this chapter. Custom designs available on request.

Spare parts for NC Standard Drill Chuck



For design WTE 13

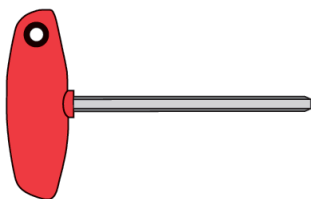
No.	Description	Order designation	Order No.
2	Stop disc	89.213.10	30266155
3	Bevel gear	89.213.06	30266195
4	Spindle	89.213.103	30336465
5	Expansion cone	89.213.101	30336463
6	Pinion	89.213.102	30336464
7	Pinion screw	89.213.08	30266193
8	Clamping jaws (1 set = 3 pieces)	89.213.03	30266139
9	Sleeve	89.213.100	30336462
10	O-ring, red	89.213.39	30346068

For design WTE 16

No.	Description	Order designation	Order No.
2	Stop disc	89.213.10	30266155
3	Bevel gear	89.213.06	30266195
4	Spindle	89.216.103	30336485
5	Expansion cone	89.216.101	30336484
6	Pinion	89.213.102	30336464
7	Pinion screw	89.213.08	30266193
8	Clamping jaws (1 set = 3 pieces)	89.213.03	30266139
9	Sleeve	89.216.100	30336483
10	O-ring, red	89.216.39	30263595

Hexagonal T-key

For pinion activation



sw	l	Weight [kg]	Order designation	Order No.
6	100	0.03	89.206.06	10006237